

INSTRUCTIVO DE OPERACIÓN, CENTROS DE SERVICIO Y
PÓLIZA DE GARANTÍA. ADVERTENCIA: LEÁSE ESTE INSTRU-
TIVO ANTES DE USAR EL PRODUCTO.

INSTRUCTION MANUAL
GUIDE D'UTILISATION
MANUAL DE INSTRUCCIONES

DEWALT®

DW610 Router
Troupie Toupie électronique
Rebajadora con base fija

DeWALT Industrial Tool Co., 701 East Joppa Road, Baltimore, MD 21286
Printed in U.S.A. (JUL02-CD-1) Form No. 158670-01 DW610 Copyright © 1998, 2000

The following are trademarks for one or more DeWALT power tools: the yellow and black color scheme; the "D" shaped air intake grill; the array of pyramids on the handgrip; the kit box configuration; and the array of lozenge-shaped humps on the surface of the tool.

IF YOU HAVE ANY QUESTIONS OR COMMENTS ABOUT THIS OR ANY DeWALT TOOL,
CALL US TOLL FREE AT:

1-800-4-DEWALT (1-800-433-9258)

General Safety Instructions for All Tools

⚠ WARNING! Read and understand all instructions. Failure to follow all instructions listed below, may result in electric shock, fire and/or serious personal injury.

SAVE THESE INSTRUCTIONS

- **KEEP WORK AREA CLEAN.** Cluttered areas and benches invite injuries.
- **CONSIDER WORK AREA ENVIRONMENT.** Don't expose power tools to rain. Don't use power tools in damp or wet locations. Keep work area well lit.
- **GUARD AGAINST ELECTRIC SHOCK.** Prevent body contact with grounded surfaces; for example, pipes, radiators, ranges, and refrigerator enclosures.
- **KEEP CHILDREN AWAY.** All visitors should be kept away from work area. Do not let visitors contact tool or extension cord.
- **STORE IDLE TOOLS.** When not in use, tools should be stored in dry, and high or locked-up place — out of reach of children.
- **DON'T FORCE A TOOL.** It will do the job better and safer at the rate for which it was intended.
- **USE RIGHT TOOL.** Don't force small tool or attachment to do the job of a heavy duty tool. Don't use tool for purpose not intended; for example, don't use circular saw for cutting tree limbs or logs.
- **DRESS PROPERLY.** Do not wear loose clothing or jewelry. Contain long hair. Keep your hair, clothing, and gloves away from moving parts. Loose clothing, jewelry, or long hair can be caught in moving parts. Air vents often cover moving parts and should also be avoided.
- **USE SAFETY GLASSES.** Also use face or dust mask if operation is dusty.
- **DON'T ABUSE CORD.** Never carry tool by cord or yank it to disconnect from receptacle. Keep cord from heat, oil, and sharp edges.
- **SECURE WORK.** Use clamps or a vise to hold work. It's safer than using your hand and it frees both hands to operate tool.
- **DON'T OVERREACH.** Keep proper footing and balance at all times.
- **MAINTAIN TOOLS WITH CARE.** Keep tools sharp and clean for better and safe performance. Follow instructions for lubricating and changing accessories. Inspect tool cords periodically and if damaged have repaired by authorized service facility. Inspect extension cords periodically and replace if damaged. Keep handles dry, clean, and free from oil and grease.
- **DISCONNECT OR LOCK OFF TOOLS** when not in use, before servicing, and when changing accessories, such as blades, bits, cutters.
- **REMOVE ADJUSTING KEYS AND WRENCHES.** Form habit of checking to see that keys and adjusting wrenches are removed from tool before turning it on.
- **AVOID UNINTENTIONAL STARTING.** Don't carry plugged-in tool with finger on the switch. Be sure the switch is off when plugging in.
- **OUTDOOR USE EXTENSION CORDS.** When tool is used outdoors, use only extension cords intended for use outdoors and so marked.
- **STAY ALERT.** Watch what you are doing. Use common sense. Do not operate tool when you are tired.
- **CHECK DAMAGED PARTS.** Before further use of the tool, a guard or other part that is damaged should be carefully checked to determine that it will operate properly and perform its intended function. Check for alignment of moving parts, binding of moving parts, breakage of parts, mounting, and any other conditions that may affect its operation. A guard or other part that is defective should be properly repaired or replaced by an authorized service center unless otherwise indicated elsewhere in this instruction manual. Have defective switches replaced by authorized service center. Do not use tool if switch does not turn it on and off.
- **DO NOT OPERATE** portable electric tools near flammable liquids or in gaseous or explosive atmospheres. Motors in these tools normally spark, and the sparks might ignite fumes.

Additional Safety Rules for Routers

- **KEEP HANDS AWAY** from cutting area. Never reach under the material for any reason.

Hold front of tool by grasping the contoured gripping area. Do not insert fingers or thumb into the vicinity of the cutter head. Keep the router base firmly in contact with the work when cutting. Do not stabilize the router by holding the base.

- **USE SHARP CUTTERS.** Dull cutters may cause the router to swerve or stall under pressure.
- Never touch the bit immediately after use. It may be extremely hot.
- Be sure that the motor has stopped completely before you lay the router down. If the cutter head is still spinning when the tool is laid down, it could cause injury or damage.
- Be sure that the router bit is clear of the workpiece before starting motor. If the bit is in contact with the workpiece when the motor starts it could make the router jump, causing damage or injury.

⚠ CAUTION: Wear appropriate personal hearing protection during use. Under some conditions and duration of use, noise from this product may contribute to hearing loss.

⚠ WARNING: Some dust created by power sanding, sawing, grinding, drilling, and other construction activities contains chemicals known to cause cancer, birth defects or other reproductive harm. Some examples of these chemicals are:

- lead from lead-based paints,
- crystalline silica from bricks and cement and other masonry products, and
- arsenic and chromium from chemically-treated lumber (CCA).

Your risk from these exposures varies, depending on how often you do this type of work. To reduce your exposure to these chemicals: work in a well ventilated area, and work with approved safety equipment, such as those dust masks that are specially designed to filter out microscopic particles.

- **Avoid prolonged contact with dust from power sanding, sawing, grinding, drilling, and other construction activities.** Wear protective clothing and wash exposed areas with soap and water. Allowing dust to get into your mouth, eyes, or lay on the skin may promote absorption of harmful chemicals.

SAVE THESE INSTRUCTIONS FOR FUTURE USE

Grounding

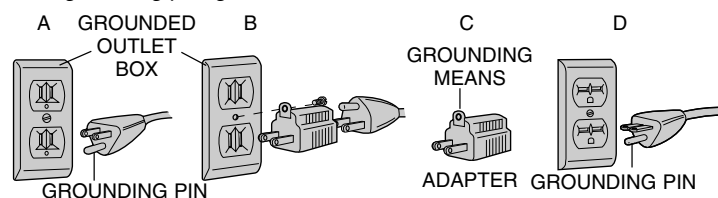
This tool should be grounded while in use to protect the operator from electric shock. The tool is equipped with an approved three-conductor cord and three-prong grounding type plug to fit the proper grounding type receptacle. The green (or green and yellow) conductor in the cord is the grounding wire. Never connect the green (or green and yellow) wire to a live terminal.

If your unit is intended for use on less than 150 volts, it has a plug similar to that shown in Figure A. An adapter, Figures B and C, is available for connecting Figure A plugs to two-prong receptacles. The green-colored rigid ear, lug, etc., must be connected to a permanent ground such as a properly grounded outlet box. Whenever the adapter is used, it must be held in place by a metal screw.

NOTE: The 220 volt plug and plug outlet are different from those shown in Figures B and C.

⚠ WARNING: Improper connection of the equipment grounding conductor can result in the risk of electric shock. Check with a qualified electrician or service person if you are in doubt as to whether the outlet is properly grounded. Do not modify the plug provided with the appliance. If it will not fit the outlet, a proper outlet must be installed by a qualified electrician.

We recommend that you never disassemble the tool or try to do any rewiring in the electrical system. Any repairs should be performed only by authorized service centers. Should you be determined to make a repair yourself, remember that the green colored wire is the grounding wire. Never connect this green wire to a live terminal. If you replace the plug on the power cord, be sure to connect the green wire only to the grounding (longest) prong on a three-prong plug. Never remove the grounding prong.



Extension Cords

Double insulated tools have 2-wire cords and can be used with 2-wire or 3-wire extension cords. Only round jacketed extension cords should be used, and we recommend that they be listed by Underwriters Laboratories (U.L.). If the extension will be used outside, the cord must be suitable for outdoor use. Any cord marked as outdoor can be used for indoor work. The letters "W" or "WA" on the cord jacket indicate that the cord is suitable for outdoor use.

An extension cord must have adequate wire size (AWG or American Wire Gauge) for safety, and to prevent loss of power and overheating. The smaller the gauge number of the wire, the greater the capacity of the cable, that is 16 gauge has more capacity than 18 gauge. When using more than one extension to make up the total length, be sure each individual extension contains at least the minimum wire size.

To determine the minimum wire size required, refer to the extension cord chart.

Volts		Minimum Gauge for Cord Sets Total Length of Cord in Feet			
120V	0-25	26-50	51-100	101-150	
240V	0-50	51-100	101-200	201-300	
Ampere Rating		AWG			
More Than	Not more Than				
6	10	18	16	14	12

Before using an extension cord, inspect it for loose or exposed wires, damaged insulation, and defective fittings. Make any needed repairs or replace the cord if necessary.

Collet

IMPORTANT NOTE: NEVER TIGHTEN COLLET NUT IF THERE IS NO CUTTER IN THE COLLET. COMPRESSING COLLET TOO MUCH MIGHT RESULT IN DAMAGE.

A 1/2" collet is installed in your router and a 1/4" collet is included in the package.

To Change Collet

Unplug the router. Using the supplied wrenches as necessary, simply unscrew and remove the collet nut. Pull the collet out of the end of the shaft.

Installing Router Bits

TURN OFF AND UNPLUG ROUTER.

To install a router bit, first open the collet by loosening (counterclockwise) the collet nut. Use the supplied wrenches if necessary. Insert the shaft of the desired bit into the collet as far as it will go and then pull it out about 1/16" (1.5 mm). Hold the router shaft with one of the wrenches and firmly tighten the collet nut with the other.

⚠ CAUTION: Router Bits Are Sharp. Use Care In Handling Them.

Depth Adjustment

TURN OFF AND UNPLUG ROUTER.

Follow the steps below to adjust router cutting depth.

1. Turn off the router and unplug the cord.
2. Select and install the desired bit.
3. Place the router down on its base on your work piece.
4. Loosen the wing nut (A) on the depth adjuster and turn the depth adjusting knob (B), shown in Figure 1, to raise or lower the bit until it just touches the work piece.
5. Rotate the black calibrated knob (A) to align the "0" mark with the notch (B) in the housing, as shown in Figure 2.
6. Turn the router upside down and put it on the work piece.

7. Rotate the depth adjusting knob (A) until the desired depth, as shown on the black calibrated knob, is aligned with the notch in the housing, as shown in Figure 3. (The depth set in this example is 1/4" /6 mm.) Note that each mark = 1/64" (0.4 mm).

8. Tighten the wing nut. The depth is now set.

NOTE: Never operate the router with the wing nut (A)(Fig.1) loosened.

Operation

All common routing tasks can be performed with ease with the router: Grooving, rabbeting, recessing, veining, and profiling on all types of wood and plastic. Always feed the router opposite to the direction in which the cutter is rotating. The router should be moved in a counter-clockwise direction when working around a template, or routing free-hand. Keep handle knobs in place and operate with both hands on the knobs for proper control. Only carbide-tipped cutters should be used on panels faced with plastic laminates. Though the motor in this router is relatively high powered, it is recommended that the user make multiple passes of incremental depth when using large diameter cutters or in hardwoods. Not only will this improve the cut finish, it will also extend cutter life and tool life.

After setting the cutting depth as described, locate the router such that the bit is directly over the place you will be cutting. With the router running, lower the unit smoothly down into the work piece.

Switch

To turn the tool on, push the switch toggle as indicated on the tool. To turn the tool off, push the toggle toward the "off" indicated on the tool.

Lubrication

Your router uses sealed ball bearings and no periodic lubrication is required.

Accessories

Recommended accessories for use with your tool are available at extra cost from your local dealer or service center. Recommended accessories for your tool are shown in this manual.

CAUTION: The use of any other accessory not recommended for use with this tool could be hazardous.

Repairs

To assure product SAFETY and RELIABILITY, repairs, maintenance and adjustment (including brush inspection and replacement) should be performed by authorized service centers or other qualified service organizations, always using identical replacement parts.

Full Warranty

DeWALT heavy duty industrial tools are warranted for one year from date of purchase. We will repair, without charge, any defects due to faulty materials or workmanship. For warranty repair information, call 1-800-4-DEWALT. This warranty does not apply to accessories or damage caused where repairs have been made or attempted by others. This warranty gives you specific legal rights and you may have other rights which vary in certain states or provinces.

In addition to the warranty, DeWALT tools are covered by our:

30 DAY NO RISK SATISFACTION GUARANTEE

If you are not completely satisfied with the performance of your DeWALT heavy duty industrial tool, simply return it to the participating seller within 30 days for a full refund. Please return the complete unit, transportation prepaid. Proof of purchase may be required.

FREE WARNING LABEL REPLACEMENT: If your warning labels become illegible or are missing, call 1-800-4-DEWALT for a free replacement.

FIG. 1

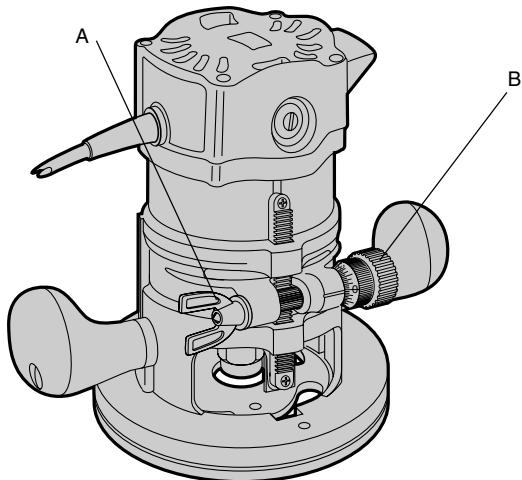


FIG. 2

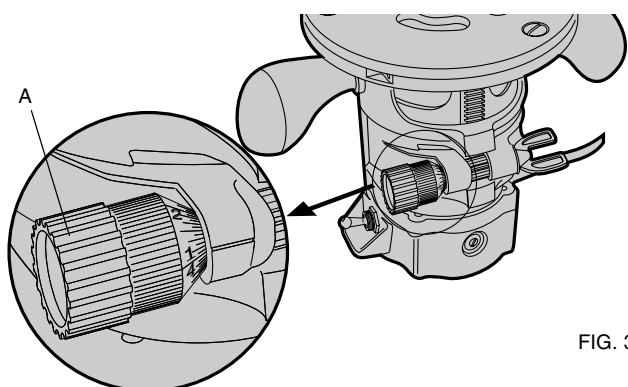
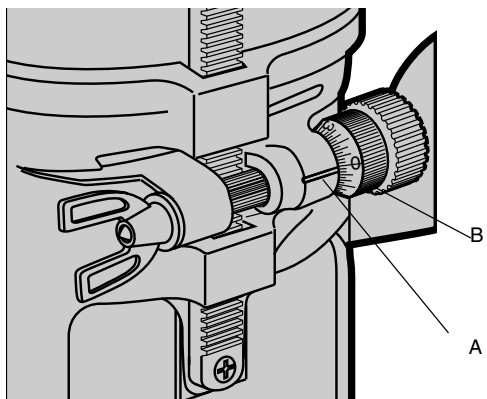


FIG. 3

Mesures de sécurité pour tous les outils

- **BIEN DÉGAGER LA SURFACE DE TRAVAIL.** Des surfaces et des établis encombrés peuvent être la cause de blessures.
- **TENIR COMPTE DU MILIEU DE TRAVAIL.** Protéger les outils électriques de la pluie. Ne pas s'en servir dans des endroits humides ou mouillés. Bien éclairer la surface de travail. Ne pas se servir de l'outil en présence de liquides ou de gaz inflammables.
- **SE PROTÉGER CONTRE LES SECOURS ÉLECTRIQUES.** Éviter tout contact avec des objets mis à la terre, comme des tuyaux, radiateurs, cuisinières, réfrigérateurs et autres objets du genre.
- **ÉLOIGNER LES ENFANTS.** Tous les visiteurs doivent être tenus à l'écart de l'aire de travail et il faut les empêcher de toucher à l'outil ou au cordon de rallonge.
- **RANGER LES OUTILS INUTILISÉS.** Il faut ranger les outils dans un endroit sec, situé en hauteur ou fermé à clé, hors de la portée des enfants.
- **NE JAMAIS FORCER L'OUTIL.** Afin d'obtenir un rendement sûr et efficace, utiliser l'outil à son rendement nominal.
- **UTILISER L'OUTIL APPROPRIÉ.** Ne jamais exiger d'un petit outil ou d'un accessoire le rendement d'un outil de fabrication plus robuste. Se servir de l'outil selon l'usage prévu.
- **PORTER DES VÊTEMENTS APPROPRIÉS.** Éviter de porter des vêtements amples et des bijoux qui peuvent être happés par les pièces en mouvement. Porter des gants de caoutchouc et des chaussures à semelle antidérapante pour travailler à l'extérieur. Protéger la chevelure si elle est longue. Se tenir éloigné des événements puisque ces derniers pourraient camoufler des pièces mobiles.
- **PORTER DES LUNETTES DE SÉCURITÉ.** Porter également un masque respiratoire si le travail de coupe produit de la poussière.
- **NE PAS MANIPULER LE CORDON DE FAÇON ABUSIVE.** Ne pas transporter l'outil par le cordon ni tirer sur ce dernier pour le débrancher de la prise. Éloigner le cordon des sources de chaleur, des flammes d'huile et des arêtes tranchantes.
- **ASSUJETTIR LA PIÈCE.** Immobiliser la pièce à l'aide de brides ou d'un étau. On peut alors se servir des deux mains pour faire fonctionner l'outil, ce qui est plus sûr.
- **NE PAS DÉPASSER SA PORTÉE.** Toujours demeurer dans une position stable et garder son équilibre.
- **PRENDRE SOIN DES OUTILS.** Conserver les outils propres pour qu'ils donnent un rendement supérieur et sûr. Suivre les directives concernant la lubrification et le remplacement des accessoires. Inspecter régulièrement le cordon de l'outil et le faire réparer au besoin à un atelier d'entretien autorisé. Inspecter régulièrement les cordons de rallonge et les remplacer lorsqu'ils sont endommagés. S'assurer que les poignées sont toujours propres, sèches et libres de toute tache d'huile ou de graisse.
- **DÉBRANCHER OU VERROUILLER EN POSITION HORS TENSION LES OUTILS NON UTILISÉS.** Respecter cette mesure lorsqu'on ne se sert pas de l'outil, ou qu'on doit le réparer ou en changer un accessoire (comme une lame, un foret ou un couteau).
- **ENLEVER LES CLÉS DE RÉGLAGE.** Prendre l'habitude de vérifier si les clés de réglage ont été retirées avant de faire démarrer l'outil.
- **ÉVITER LES DÉMARRAGES ACCIDENTELS.** Ne pas laisser le doigt sur l'interrupteur lorsqu'on transporte l'outil. S'assurer que l'interrupteur est à la position hors circuit lorsqu'on branche l'outil.
- **CORDONS DE RALLONGE.** S'assurer que le cordon de rallonge est en bon état. Lorsqu'on se sert d'un cordon de rallonge, s'assurer qu'il est de calibre approprié pour la tension nécessaire au fonctionnement de l'outil. L'utilisation d'un cordon de calibre inférieur occasionne une baisse de tension entraînant une perte de puissance et la surchauffe. Le tableau suivant indique le calibre approprié selon la longueur du cordon et les mentions de la plaque signalétique de l'outil. En cas de doute, utiliser un cordon de calibre supérieur. Le chiffre indiquant le calibre est inversement proportionnel au calibre du cordon.

Calibre minimal des cordons de rallonge

Tension	Longueur totale du cordon en mètres			
120 V	De 0 à 7	De 7 à 15	De 15 à 30	De 30 à 45
240 V	De 0 à 7	De 7 à 15	De 15 à 30	De 30 à 45

Intensité (A)	Calibre moyen de fil				
Au moins	plus				
6	10	18	16	14	12

- **CORDONS DE RALLONGE PRÉVUS POUR L'EXTÉRIEUR.** Lorsque l'outil est utilisé à l'extérieur, ne se servir que d'un cordon de rallonge conçu pour l'extérieur et portant la mention appropriée.
- **DEMEURER VIGILANT.** Travailler avec vigilance et faire preuve de bon sens. Ne pas se servir de l'outil lorsqu'on est fatigué.
- **VÉRIFIER LES PIÈCES ENDOMMAGÉES.** Avant de continuer à utiliser l'outil, il faut vérifier si le protecteur ou toute autre pièce endommagée remplit bien la fonction pour laquelle il a été prévu. Vérifier l'alignement et les attaches des pièces mobiles, le degré d'usure des pièces et leur montage, ainsi que tout autre facteur susceptible de nuire au bon fonctionnement de l'outil. Faire réparer ou remplacer tout protecteur ou toute autre pièce endommagée dans un centre de service autorisé, sauf si le présent guide fait mention d'un avis contraire. Confier le remplacement de tout interrupteur défectueux à un centre de service autorisé. Ne jamais se servir d'un outil dont l'interrupteur est défectueux.
- **Ne le saisir que par ses poignées en plastique afin de se protéger des secousses électriques que provoqueraient le contact de la lame avec un fil sous tension.** Lorsqu'on scie dans les murs, les planchers ou tout autre endroit où peuvent se trouver des fils sous tension, ne pas toucher à tout composant métallique de l'outil.
- **S'assurer que les poignées sont toujours propres, sèches et libres de toute tache d'huile ou de graisse.** Il est recommandé de porter des gants de caoutchouc. On améliore de la sorte la maîtrise de l'outil.
- L'étiquette de l'outil peut comporter les symboles suivants.

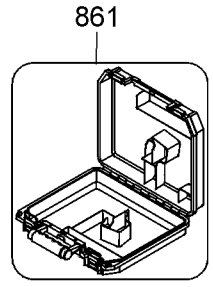
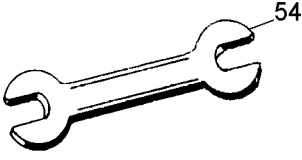
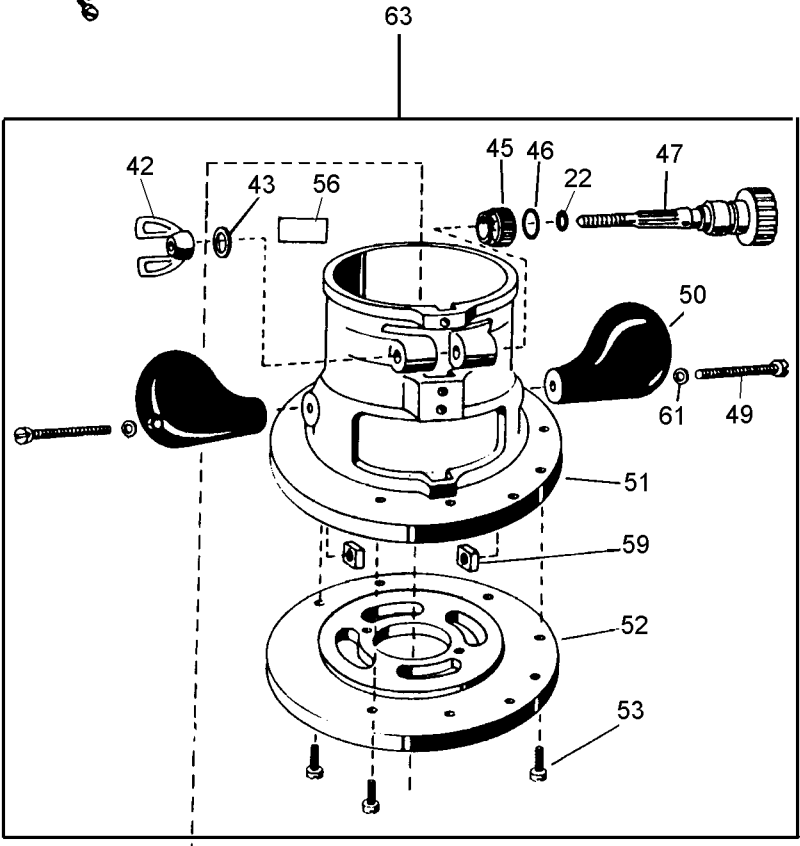
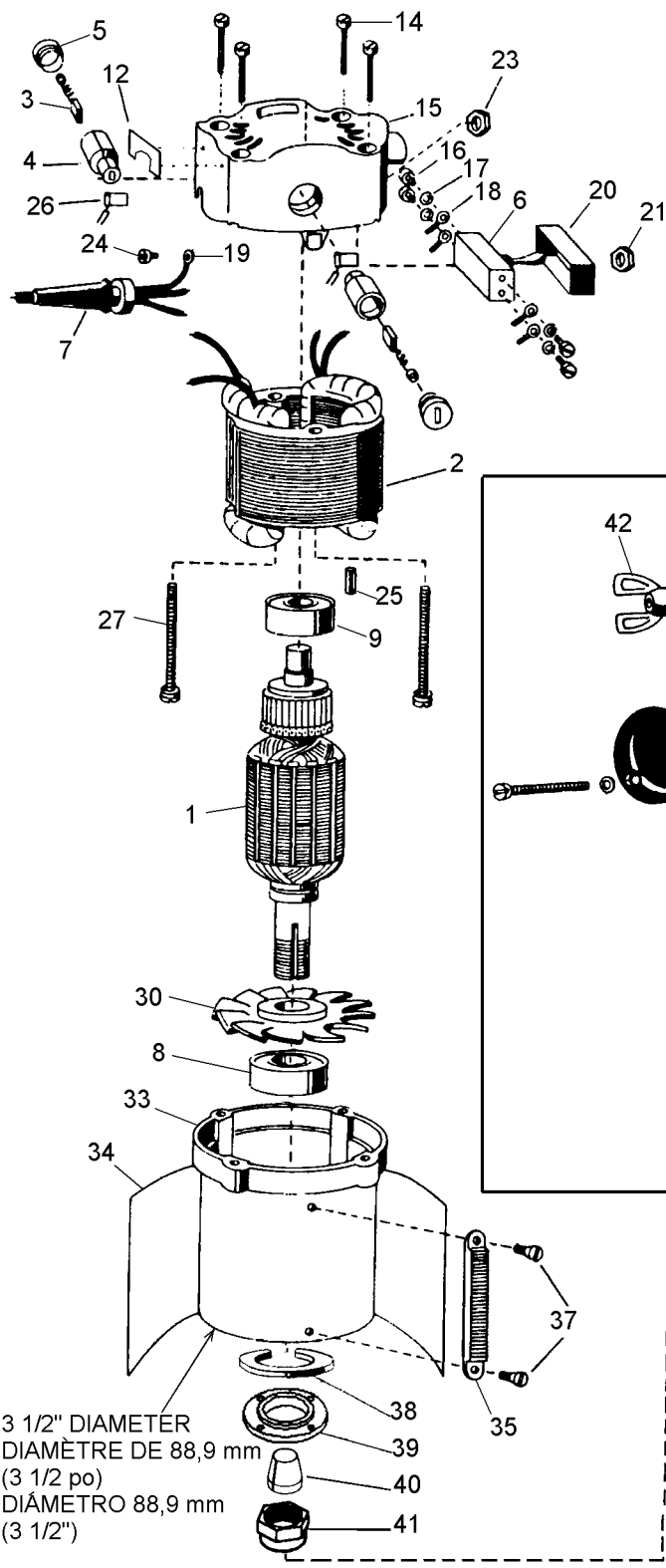
V.....volts	Aampères
Hz.....hertz	Wwatts
minminutes	~courant alternatif
====courant continu	no.....sous vide
☐Construction de classe II	⊕borne de mise à la minute
⚠symbole d'avertissement	.../mintours ou courses à la minute

⚠ MISE EN GARDE : Lorsqu'on perce ou qu'on visse dans les murs, les planchers ou tout autre endroit où peuvent se trouver des fils sous tension, **NE PAS TOUCHER À TOUT COMPOSANT MÉTALLIQUE DE L'OUTIL.** Ne le saisir que par ses surfaces de prise isolées afin de se protéger des secousses électriques.

Règles de sécurité additionnelles concernant les toupies

- **Ne jamais toucher à la mèche immédiatement après l'avoir utilisée,** car elle peut être extrêmement chaude.
- **Attendre que le moteur s'arrête complètement avant de déposer la toupie.** Si l'arête tranchante tourne encore lorsqu'on dépose l'outil, on risque de causer des dommages ou des blessures.
- **S'assurer que la mèche n'est pas en contact avec la pièce avant de démarrer le moteur,** afin d'éviter de faire bondir la toupie et de causer des dommages ou des blessures.
- **Garder les mains éloignées des zones de coupe; ne pas mettre les mains sous le matériel pour quelque raison que ce soit.** S'assurer de bien maintenir la base de la toupie en contact avec la pièce lors de la coupe et de toujours tenir l'outil par les poignées seulement afin de réduire les risques de blessures.
- **Toujours utiliser une arête bien aiguisée,** car les arêtes usées peuvent faire dévier la toupie ou faire caler le moteur lorsqu'on exerce trop de pression sur l'outil.
- **MISE EN GARDE :** porter un dispositif de protection personnel anti-bruit approprié durant l'utilisation. Sous certaines conditions et pendant toute la durée de l'utilisation, le bruit émanant de ce produit pourrait contribuer à la perte d'audition.

⚠ AVERTISSEMENT : Certains outils, tels que les sableuses électriques, les scies, les meules, les perceuses ou certains autres outils de construction, peuvent soulever de la poussière contenant des produits chimiques susceptibles d'entraîner le cancer, des malformations congénitales ou pouvant être nocifs pour le système reproductif. Parmi ces produits chimiques, on retrouve :



Parts List for DW610 Type 1

Item Number	Part Number	Description	Qty Required
35	146556-00	RACK	1
37	158487-00	SCREW,FLAT HEAD	2
38	000000-00	No Longer Available	1
39	394219-00	CLAMP NUT	1
40	150062-00	COLLET,1/4	1
40	150061-00	COLLET,1/2	1
41	150063-00	NUT	1
42	090914-00	WING NUT	1
43	46084-00	WASHER	1
45	000000-00	No Longer Available	1
46	50049-00	O RING	1
47	133553-00	PINION	1
49	399748-00	SCREW	2
50	88024-00	KNOB	2
51	000000-00	No Longer Available	1
52	88761-00	SUB BASE	1
53	158414-00	SCREW,SELF TPG.	3
54	150133-00	WRENCH	2
56	000000-00	No Longer Available	1
59	81999-00	NUT	2
61	143168-00	WASHER	2
63	000000-00	No Longer Available	1
861	397683-00	KIT BOX	1

COPYRIGHT© 2005. All Rights Reserved.

Parts list, pricing, and availability subject to change. Please visit www.dewaltservicenet.com for current parts information.

Parts List for DW610 Type 1

Item Number	Part Number	Description	Qty Required
1	000000-00	No Longer Available	1
2	000000-00	No Longer Available	1
3	400814-00	BRUSH & SPRING	2
4	61208-03	HOLDER,BRUSH	2
5	046210-00	BRUSH CAP	2
6	37502-00	SWITCH,TOGGLE	1
7	000000-00	No Longer Available	1
8	146555-01	BEARING, BALL	1
9	158475-00	BEARING,BALL	1
12	000000-00	No Longer Available	1
14	131516-00	SCREW	4
15	000000-00	No Longer Available	1
16	20405-00	SCREW	4
17	001991-00	WASHER	4
18	053650-00	TERMINAL	4
19	88667-00	TERMINAL	1
20	72127-00	INSULATOR	1
21	000000-00	No Longer Available	1
22	50056-00	O RING	1
23	24701-00	NUT	1
24	626-00	SCREW	1
25	030612-00	PLUG	1
26	068470-00	TERMINAL	2
27	006125-00	SCREW	2
30	146558-00	FAN	1
33	000000-00	No Longer Available	1
34	146549-00	BAND,HOUSING	1

COPYRIGHT© 2005. All Rights Reserved.

Parts list, pricing, and availability subject to change. Please visit www.dewaltservicenetwork.com for current parts information.